

# Analysis of Aluminum Alloys with Thermo Scientific ARL iSpark 8820 AI1 Optical Emission Spectrometer

Dr Jean-Marc Böhlen, Thermo Fisher Scientific, Ecublens, Switzerland

## Key Words

ARL iSpark, Dual CCD/PMT optics, Aluminum alloys, Optical emission, OES, Metal analyzer

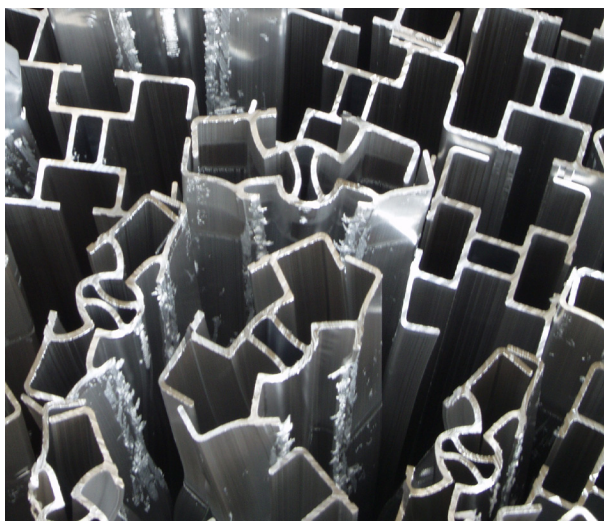
## Goal

Perform reliable and fast quantitative determination of trace and alloying elements in solid aluminum alloy samples

## Introduction

For over 80 years, our company has set the standard of quality for spectrochemical analysis of metals. Throughout these years, performance, stability, reliability and longevity have been the key attributes of our optical emission spectrometers. The Thermo Scientific™ ARL iSpark™ 8820 metals analyzer combines these guiding principles with our experience and technical innovation to bring our customers, the complete value based solution they have come to expect from our company.

The ARL iSpark 8820 will determine the elements necessary in your current and future applications, in all possible aluminum qualities. It is the answer to your analytical needs, whether for incoming goods control, metal sorting, process QC, final product QC, certification or investigation. Working 24 hours a day and 7 days a week, the ARL iSpark 8820 Metals Analyzer delivers dependable performance year after year. Specific performance is detailed in this application note.



## ARL iSpark 8820 – Experience and innovation

The ARL iSpark 8820 is based on Thermo Scientific famous one-meter PMT spectrometer in Paschen-Runge mounting operated under vacuum.

The spectrometer offers optimal resolution and stability and ensures outstanding performance for all the critical elements.

The instrument is equipped with an additional spectrometer using a high performance, scientific grade tri-linear CCD (Charge Coupled Device) detector.

Together the two spectrometers compose a unique dual PMT/CCD optics that significantly increases the analytical capability of the instrument.

Other highly innovative features and technologies characterize further the instrument, among which:

- Advanced PMT and CCD signal acquisition and processing for improved performance and accuracy
- IntelliSource, a digital spark source with increased flexibility and efficiency
- Spark stand with improved design to reduce maintenance and minimize argon consumption during the analysis
- ECOMode and super ECOMode allowing significant argon savings when the instrument is idle
- Optimal instrument design increasing the instrument functionality.

### Dual CCD/PMT optical system

On the ARL iSpark 8820, selection of PMT or CCD type of detectors is made for each element in order to guarantee optimal performance for every element.

For example, PMTs are used for the most critical elements, which allows their determination down to low trace levels.

In addition, the CCD spectrometer offers flexibility for extension of analysis capabilities.

Finally, the CCD spectrometer has a continuous spectral coverage that offers unique capability for spectral investigations, making it a precious tool for metals research.

### intelliSource digital spark source

The Thermo Scientific™ IntelliSource is a double current controlled source (CCS), the most innovative excitation source for Spark-OES. More flexible than the other digital sources, it allows discharge shapes to be tailored for most efficient control of the sample surface preparation, material ablation and light emission in various metal matrices.

Matrix-optimized pre-integration sparks significantly reduce the effects of matrix and metallurgical structure (in re-melting the sample surface before the integration spark), which improves the accuracy of the analysis.

Other innovative features contribute to the performance of the IntelliSource, e.g. DISC (Discharge Interrupt by Short-Circuit) that improves the repeatability in trace analysis.

### Time Gated Acquisition (TGA) for PMT channels

TGA is a high precision version of the TRS (Time Resolved Spectroscopy). The acquisition is performed during TGA windows, i.e. very short time windows synchronized with the single sparks.

Optimized start and duration of the window allow collecting the signal of interest when unwanted signals (e.g. noise, high background emission or spectral interference) have minimal deleterious effect.

This results in lower detection limits and better precision values. In some cases, TGA also reduces the need for interference correction, therefore improving accuracy.

### PMT signal processing

The signals integrated during the TGA windows are digitized for each individual spark. Several signal

processing methods contribute to the performance with the PMTs:

- The algorithm FAST (Flexible Acquisition Start/stop) allows acquiring an optimal subset of single spark intensities - the most steady part of the signal - for each channel
- The algorithm DISIRE (Diffuse Spark Intensities Removal) improves precision by discarding abnormally low intensity signals.

### CCD signal acquisition and processing

Different techniques and methods are applied in order to improve performance with the CCD of the ARL iSpark 8820. Simultaneous read-out of the three lines of the CCD (binning) and dynamic dark current subtraction enhance the signal to noise ratio.

Spectrum alignment and digital resolution enhancement are performed automatically during every acquisition to maximize precision, accuracy and long-term stability.

### Sample preparation

The sample surface is generally prepared by using a lathe or a milling machine. Grinding is not possible because of risk of contamination.

### Sample analysis time

The analysis time taken between the start of the analysis and the display of its result is in average 27 s.

### Performance guarantee

Our company guarantees the precision and the detection limit (DL). The precision expresses the closeness of the concentration values of the individual runs of an analysis. The lowest the precision value, the smallest the number of runs needed for high confidence in the average result.

The DL is the smallest concentration that can be distinguished from a blank value with a given probability. It is defined as three times the standard deviation of the background expressed in concentration units.

For quantitative analysis, however the lower limit of quantification ( $LLQ \approx 3 \cdot DL$ ) must be considered. The LLQ is also the lowest possible value in our calibration menu, when calibration standards availability allows calibrating down to this point.

### Accuracy and factory calibration

The accuracy is the most important figure of merit of a spectrometer. It expresses the agreement between the result and the reference value. It depends on the quality of the reference materials used for calibration, on some instrumental attributes and parameters (e.g. the optical resolution, the spark source condition or the TGA window) and on the mathematical model used to calculate the calibration curves.

The ARL iSpark 8820 is individually calibrated in our factory. The calibrations are performed by using thoroughly tested and well accepted certified reference materials (CRM's) and reference materials (RM's). The calibration curves are established utilizing CARL (Calibration ARL) a very sophisticated multi-variable regression (MVR) software tool that corrects for matrix effects as well as spectral interferences and ensure the highest possible accuracy. The same MVR is included in OXSAS analytical software for on-site calibration.

ELEMENT	Ag	B	Be	Ca	Cd	Co	Cr	Cu	Fe	Li	Mg	Mn
Typical DL [ppm]	1.2	0.1	0.02	0.25	1.5	4.5	5	2.5	3.4	0.005	0.05	0.8
Guaranteed DL [ppm]	2	0.15	0.03	0.4	2	6	8	4	5	0.02	0.1	1.5
Level	Precision (same unit as the concentration level)											
1 ppm		0.07	0.05	0.1						0.06	0.07	
2 ppm		0.1	0.07	0.15						0.1	0.1	
5 ppm	0.5	0.15	0.1	0.2	0.6					0.2	0.2	0.4
10 ppm	0.6	0.2	0.15	0.3	0.7			0.5	0.5	0.3	0.4	0.6
20 ppm	0.9	0.3	0.2	0.4	0.8	3.5	2	0.8	1	0.5	0.6	0.7
50 ppm	1.2	0.6	0.3	0.6	1	4	2	1.5	2	1	1	1.2
100 ppm	1.6	1	0.4	2	1.2	4.2	2.5	2.5	3	2	2	1.7
200 ppm	2.2	1.5	1	3	1.5	4.5	3.5	4	5	5	3	2.5
500 ppm			2	8	3	5	5	7	8		5	5
1000 ppm					5	6	10	10	12		10	7
0.2 %						0.001	0.002	0.002	0.002		0.002	0.0012
0.5 %							0.003	0.005	0.0035		0.004	0.003
1 %								0.009	0.006		0.006	0.005
2 %								0.016	0.01		0.011	0.007
3 %								0.022			0.013	
4 %								0.028			0.016	
5 %								0.032			0.02	
10 %								0.055			0.04	

ELEMENT	Na	Ni	P	Pb	Sb	Si	Sn	Sr	Ti	V	Zn	Zr
Typical DL [ppm]	0.06	5	1.4	0.2	0.6	6	0.3	0.2	1	6	0.6	3.5
Guaranteed DL [ppm]	0.1	8	2	0.3	1.3	8	0.6	0.4	2	8	1	5
Level	Precision (same unit as the concentration level)											
1 ppm	0.03			0.1								
2 ppm	0.06			0.15			0.2	0.4				
5 ppm	0.15		0.5	0.2	0.4		0.3	0.7	0.6		0.6	
10 ppm	0.2		0.7	0.3	0.6		0.4	1	1		0.8	1
20 ppm	0.35	2	0.8	0.4	1	0.5	0.5	1.5	1.3	2	1.3	1.3
50 ppm	0.6	3	1	0.8	1.5	1.5	0.6	2.5	2	2.5	2	2
100 ppm	1	4	2	1.5	2	5	1	3.3	3	3	3	2.5
200 ppm		6		2	4	7	1.5	4.5	4	4	6	3
500 ppm		8		4	7	10	3	7.5	7	5	10	3.5
1000 ppm		10		6	12	15	6	10	10	8	17	4
0.2 %		0.0025		0.001	0.002	0.002	0.001		0.002		0.003	0.0005
0.5 %		0.005		0.003	0.004	0.0045	0.0025		0.003		0.005	0.001
1 %		0.008		0.004	0.006	0.0065	0.01				0.008	
2 %		0.015				0.016					0.015	
3 %						0.024					0.02	
4 %						0.026					0.025	
5 %						0.032					0.03	
10 %						0.05					0.05	
20 %						0.09						

Remarks:

- Homogeneity of the elements depends on the metallurgical structure obtained through the sampling procedure (from cast or from rolled or extruded parts) and on the metallurgical history including mechanical deformation by rolling. These values apply when homogeneously distributed elements are present in samples which are prepared by recommended sample preparation methods. A measured precision higher than the guaranteed precision indicates, with a probability higher than 95%, that the element is segregated or has an inhomogeneous distribution over the sample's surface.
- The precision values given in the table are typical instrumental repeatability. The guaranteed precision values are 1.5 times higher
- The detection limits and the precision values are based on ten repeated measurements
- Guaranteed DLs are calculated at 95 % confidence limit

## Calibration summary

The following calibrations are available:

- Low alloy Aluminum
- Al-Si
- Al-Si-Cu
- Al-Cu
- Al-Zn
- Al-Mg
- Global (including all qualities)

Note that the global calibration offers more than a sorting program in terms of accuracy and number of analyzed elements. It can be considered as the basic calibration that allows the analysis of unknown samples. The use of a global calibration is recommended when the program choice function is used.

Our calibrations are delivered as turn-key, fully parameterized applications. Setting-up samples (SUS) are delivered with the instrument to maintain the accuracy of the calibration. Please contact your nearest Thermo Fisher Scientific office for more specific information of our calibrations.

Based on the calibration curves and the measurements repeatability, the measurement uncertainty can be displayed for each sample. A specific Product Specification is available.

## Stability

Stability of the instrument is of the utmost importance when performing routine analysis. High stability reduces the frequency for maintenance and drift correction operations.

Mid-term stability tests over 2-5 days show typical standard deviation below two times the guaranteed precision value, which is excellent.

## Memory effects

The memory effect is defined as the number of runs necessary to reduce the apparent concentrations of elements after measuring AlSi, AlSiCu, AlZn or AlMg alloy samples. For the ARL iSpark 8820 the electrode is completely cleaned and the instrument will measure very low concentration of the alloying elements after 5 runs.

## Conclusion

The ARL iSpark 8820 provides not only state-of-the-art technology, but also has all the total system features which meet the critical needs of the metals analysis markets:

- Unmatched hardware for stability and reliability
- Exceptional performance in detection limits, precision, accuracy, stability and memory effects, all this in minimum analysis time

- Most advanced software technology
- Potential to cover your future analytical needs
- Easy operation by unskilled worker or research chemist
- Widest range of metals analysis
- Advanced technical/service support.

All these features allow you to optimize your productivity and to achieve the shortest payback times:

- Your investment costs are reduced by:
  - Exceptional instrument lifetime and continuous upgrade possibilities (software and hardware)
  - Instrument capability to cover your future needs
- Your production costs are reduced by:
  - More accurate and reproducible analyzes made available faster
  - Increased instrument availability thanks to its high stability and less frequently required drift corrections
- Your operating and maintenance costs are reduced by:
  - Low consumption of drift correction samples and simple maintenance
  - Significant argon savings during analysis and in stand-by
- Your overall cost management is reduced by:
  - Optimum utilization of materials
  - Extremely low running costs compared to other methods

To know more on  
ARL iSpark Series, visit  
[www.thermoscientific.com/ispark](http://www.thermoscientific.com/ispark)



[www.thermoscientific.com](http://www.thermoscientific.com)

©2015 Thermo Fisher Scientific Inc. All rights reserved. ISO is a trademark of the International Standards Organization. All other trademarks are the property of Thermo Fisher Scientific Inc. and its subsidiaries. Specifications, terms and pricing are subject to change. Not all products are available in all countries. Please consult your local sales representative for details.

**Africa-Other** +27 11 570 1840  
**Australia** +61 2 8844 9500  
**Austria** +43 1 333 50 34 0  
**Belgium** +32 53 73 42 41  
**Canada** +1 800 530 8447  
**China** +86 10 8419 3588  
**Denmark** +45 70 23 62 60

**Europe-Other** +43 1 333 50 34 0  
**Finland /Norway/Sweden**  
+46 8 556 468 00  
**France** +33 1 60 92 48 00  
**Germany** +49 6103 408 1014  
**India** +91 22 6742 9434  
**Italy** +39 02 950 591

**Japan** +81 45 453 9100  
**Latin America** +1 608 276 5659  
**Middle East** +43 1 333 50 34 0  
**Netherlands** +31 76 579 55 55  
**South Africa** +27 11 570 1840  
**Spain** +34 914 845 965  
**Switzerland** +41 21 694 71 11

**UK** +44 1442 233555  
**USA** +1 800 532 4752



Thermo Fisher Scientific Ecublens SARL, Switzerland is ISO 9001 certified

**Thermo**  
SCIENTIFIC

A Thermo Fisher Scientific Brand